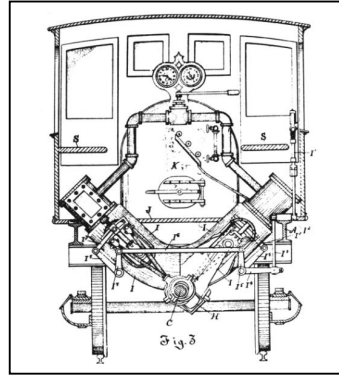


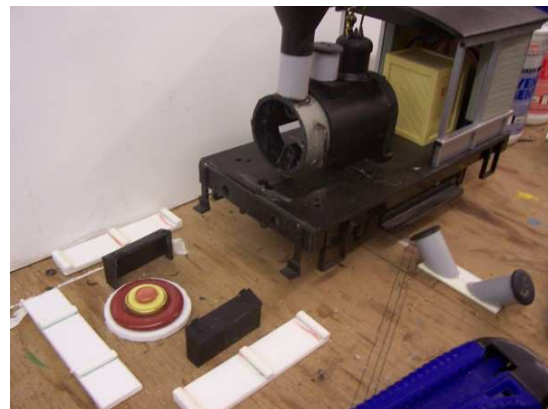
The BTR "Heisler 0-4-0" geared Loco, V2 (under boiler)



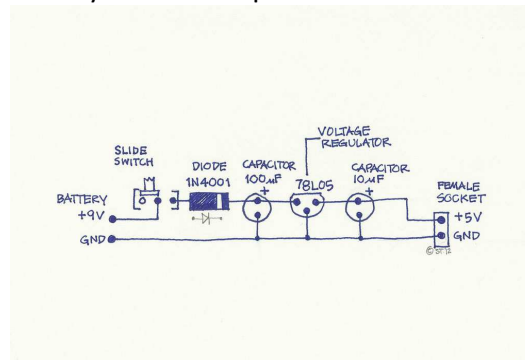
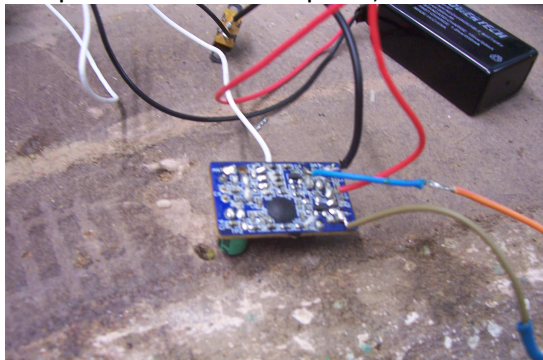
Some unique features of this 0-4-0 version Heisler include; the V2 cylinders under the boiler immediately in front of the firebox at footplate level, the cylindrical water tank on footplate, the wood burner fuel is stored at the back deck, covering the 9 volt battery.



Other modelers have also made their versions of this Loco.

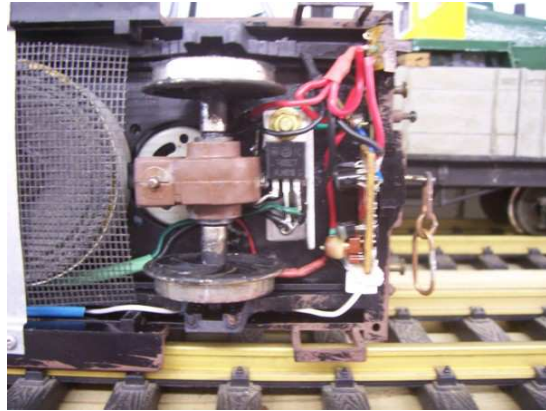
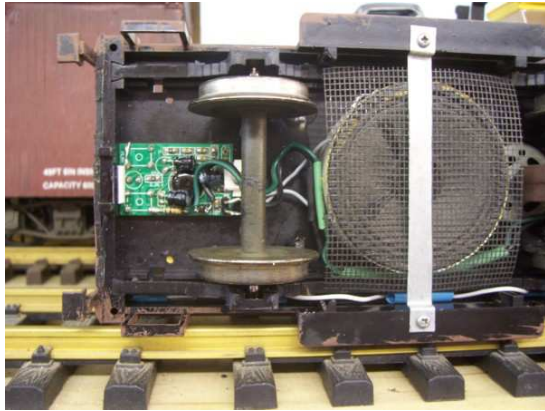


I used an Hartland Locomotive Works, Waddlin Goslin. It was cut down then with the addition of bits and pieces from the scrap box, this freelance model has yielded a unique 'character' Loco.



The Rx is 27 MHz from a toy, motor needed 9 volts, sound card needed 5 volts, hence voltage regulator.

The BTR “Heisler 0-4-0” geared Loco, V2 (under boiler)



The sound card emits a constant CHUFF, 0.25 Watt 50mm speaker is mounted under footplate.
The voltage regulator circuit and Rx unit at rear.



The completed model entered service on BTR on 29 October 2013.

